



**SHREE ENGINEERING
COMPANY**



**We Are The Manufacturer Of All Types Of
Octagonal Pole, Solar High Mast Pole,
Tubular Pole And Flag Mast Pole.**

+91-8287303924 | 8130460424



ABOUT US

Shree Engineering Company

Established in 2018, Shree Engineering Company is a trusted manufacturer of Octagonal Poles, GI Poles, Solar Panel Structures, and Street Light Arms. Under the leadership of Ms. Khusboo Aggarwal, we are committed to quality, innovation, and precision engineering, serving urban infrastructure, renewable energy, and lighting industries.

Our durable and cost-effective solutions meet the highest industry standards, ensuring reliability for highways, urban projects, and solar installations. With a customer-centric approach, we continue to build a sustainable and well-lit future.

Vision

To be a leader in urban infrastructure and renewable energy solutions, delivering durable, sustainable, and high-quality products. We strive to illuminate the future with innovation, reliability, and eco-friendly engineering.

Mission

Our mission is to manufacture high-quality, durable, and cost-effective Octagonal Poles, GI Poles, Solar Panel Structures, and Street Light Arms that meet the evolving needs of urban infrastructure and renewable energy.



CERTIFICATIONS



Our Objective will be achieved through:

- ▶ Continuous development of all employees seeking their total involvement in our pursuit of quality.
- ▶ Continuous upgradations and modifications of our equipment.
- ▶ Continuous upgradations of technology and the quality of our products.



OCTAGONAL POLE



OCTAGONAL POLE

PRODUCT SPECIFICATIONS

TECHNICAL SPECIFICATIONS:

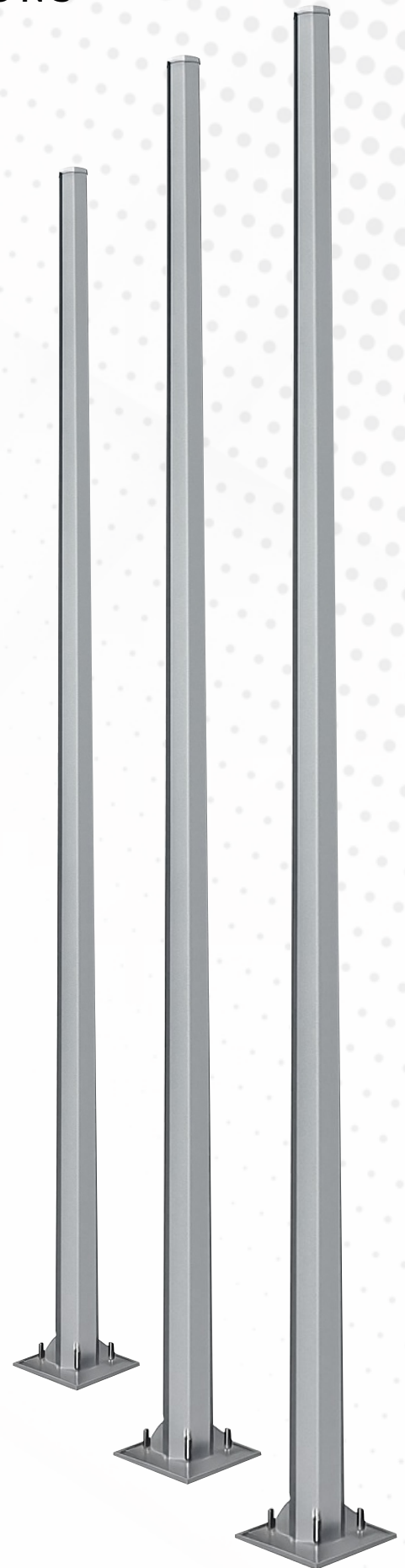
Pole Shape	Octagonal
Material	High-Grade Mild Steel (M8) / Galvanized Iron (GI)
Height Range	6 Mtr To 30 Mtr (Customizable)
Pole Thickness	3 mm To 5mm (As Per Req.)
Top Diameter	70 mm To 100 mm
Bottom Diameter	130 mm To 200 mm
Base Plate Thickness	12 mm To 20 mm
Base Plate Size	As Per Height & Design Load
Welding Type	Longitudinal Seam Welded (Single / Double)
Surface Finish	Hot Dip Galvanized / Power Coated
Wind Resistance	Up To 180 km/h
Mounting Type	Flange Mounted With Anchor Bolts
Usage	Street Lighting, Parking, Highways, Garden, Industrial Area.

OPTIONAL ACCESSORIES:

- ✓ Single/Double/Triple Arm Brackets
- ✓ Luminaire Mounting Options
- ✓ Decorative Base Covers
- ✓ Cable Entry & Junction Box Provision

FEATURES:

- ✓ Sleek, modern design for sesthetic appeal
- ✓ Rust and corrosion-resistant
- ✓ Easy installation and low maintenance
- ✓ Long-Lasting and durable



FLAG MAST POLE



FLAG MAST POLE

PRODUCT SPECIFICATIONS

TECHNICAL SPECIFICATIONS:

Height Options	1 M / 6 M / 9 M / 15 M / 20 M
Material	Hot-Dip Galvanized Steel / Aluminium
Surface Finish	Powder Coated Brushed Finish
Wind Resistance	Up to 180 km/h
Pole Type	Tapered / Conical
Accessories	Flang Mount With Anchor Bolts
Accessories	Rope, Pulley Gold Finial, Sleat

KEY FEATURES

- ✓ Corrosion-resistant materials for extended outdoor durability.
- ✓ Custom height and finish options avail.
- ✓ Easy installation with included accessories
- ✓ Designed to meet local wind-load standards.

APPLICATIONS

- ✓ Government Buildings
- ✓ Corporate Offices
- ✓ Schools
- ✓ Sports Arenas
- ✓ Hotels

OPTIONAL ADD-ONS

- ✓ Internal Halyard System
- ✓ LED Lighting
- ✓ Rotating Arm



SOLAR HIGH MAST POLE



SOLAR HIGH MAST POLE

PRODUCT SPECIFICATIONS

TECHNICAL SPECIFICATIONS:

Height Options	12 M / 16 M / 20 M
Material	Hot-Dip Galvanized Steel Or Aluminium
Surface Finish	Powder Coated Brushed Finish
Wind Resistance	Up to 180 km/h
Base Plate	Solar
Components	Solar Panel Battery, LEDuminaire

KEY FEATURES

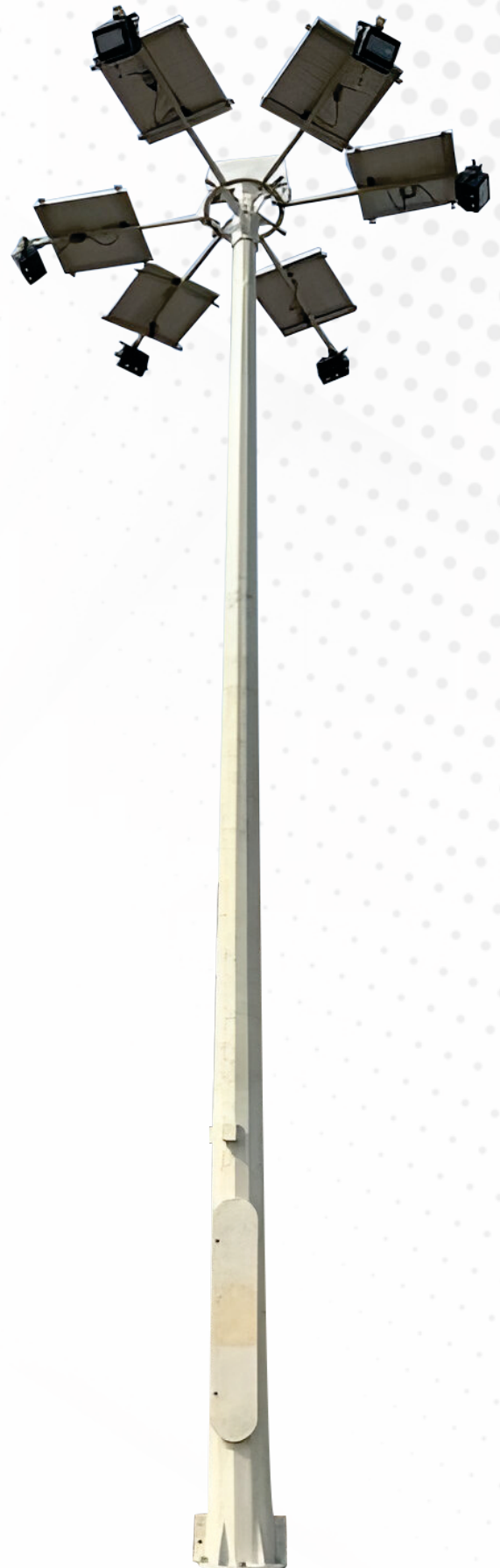
- ✓ High-efficiency solar panels and LED Lighting.
- ✓ All-in-one system design integrated components.
- ✓ Robust and weather-resistant construction.
- ✓ Autonomous operation, no need for external power supply.

APPLICATIONS

- ✓ Highways
- ✓ Industrial Facilities
- ✓ Parking Lots
- ✓ Airports
- ✓ Public Spaces

OPTIONAL ADD-ONS

- ✓ Increase Battery Capacity
- ✓ Monitoring System



TUBULAR POLE



TUBULAR POLE

— PRODUCT SPECIFICATIONS —

TECHNICAL SPECIFICATIONS:

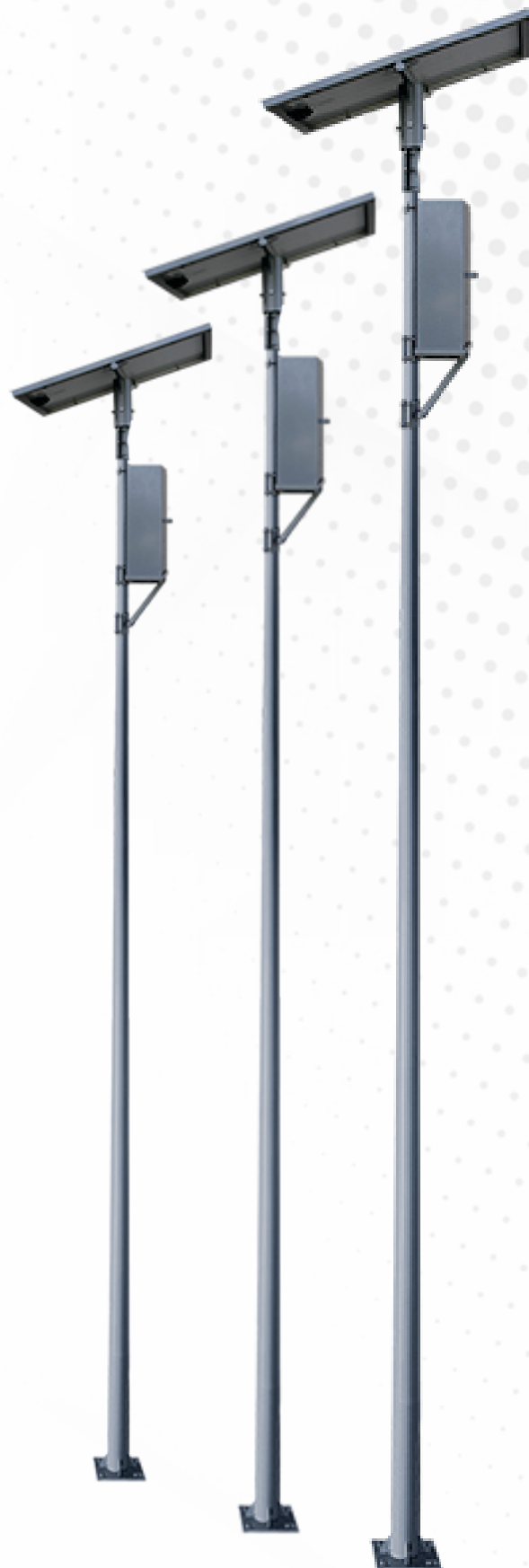
Height Range	3 M To 7.5 M
Material	MS / GI
Coating	Hot Dip Galvanized / Powder Coated
Top Diameter	Custom Based On Height
Base Plate	Heavy Duty As Per Pole Size
Wind Load Resistance	Up To 180 km/h
Mount Type	Ground Burial / Bolt Foundation

IDEAL FOR :

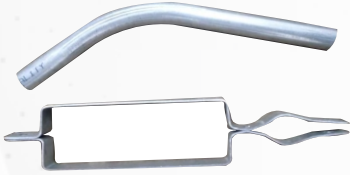
- ✓ Highways & Roadways
- ✓ Commercial Premises
- ✓ Parks & Gardens
- ✓ Industrial Campuses
- ✓ Urban Landscaping Projects

Why Choose Tubular

- ✓ Long Life Span
- ✓ Weather Resistant
- ✓ Strong & Stable Structure
- ✓ Custom Size Available



OTHER ACCESSORIES



PIPE CLAMP



WEILD SOLAR
PANEL STRUCTURE



SINGLE ARM
FOR STREET LIGHT



DOUBLE ARM
FOR STREET LIGHT



FOUNDATION BOLT



DEGREE



C- CLAMP



MS CLAMP



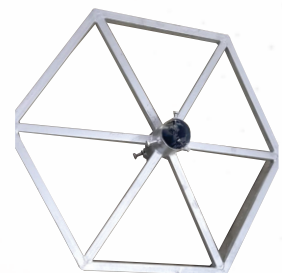
DOUBLE C-CLAMP ARM



SOLAR STRUCTURE SET



SOLAR CLAMP



6 LIGHT RING



SHREE ENGINEERING COMPANY

+91-8287303924 | 8130460424



info@shreeengineering@gmail.com



**Unit-1 Plot No. 72/34, Gali No.6 Rajendra
Nagar Industrial Area, Mohan Nagar Gzb**



**Unit-2 Site - II S 31 Industrial Area
Loni Road, Mohan Nagar Gzb**



@shreeengineeringcompany

